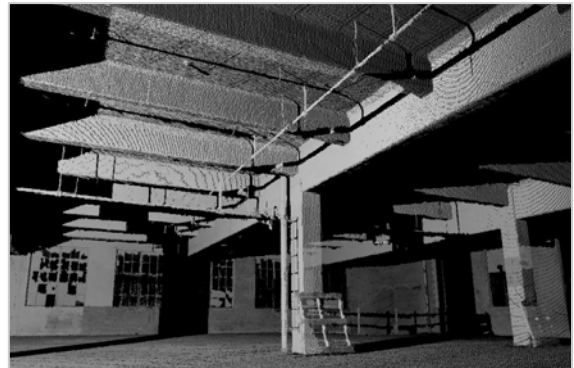


3-D LASER SCAN: ARCHITECTURAL APPLICATIONS

3-D laser scanning offers significant benefits for as-building of existing spaces for reconstruction, upgrades, and remodeling. In high-tech environments, the level of detail supports planning for design, installation/construction, and space allocation.



Left and below - Scan data from a warehouse. Multiple scans were made to provide as-builts of the entire facility. Dimensions can be made directly in the raw data, and existing structures – such as stairways, piping and conduits, lights, and beams - can be identified in the scan. In much of the facility, the scan data made it possible to identify the materials used.



Left and right, below - By zooming in on scan data for the exterior of an historic building, we were able to view and dimension detail.

